

FLANGES



FLANGE TYPES

- Weld Neck
- Lap Joint
- Slip On
- Blind
- Threaded
- Socket Welding
- Orifice
- Reducing
- Customized products possible

STANDARDS & SPECIFICATIONS

- ASME B16.5
- ASME B16.47 Series A (MSS SP-44)
- ASME B16.47 Series B (API 605)
- BS 3293
- DIN
- EN 1092-1
- AWWA C207
- GOST
- JIS B222
- Approvals from all major oil & gas companies.

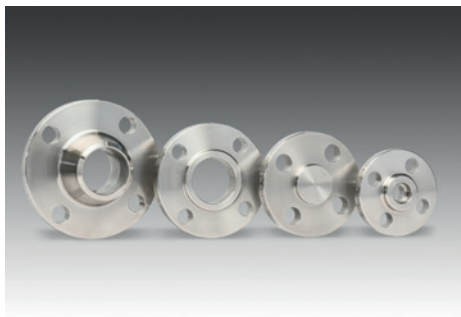
MATERIAL GRADES

- Carbon Steel:

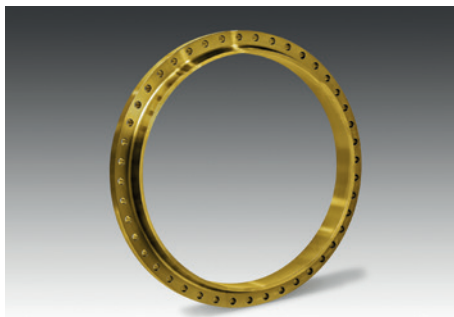
DIN/EN	C 21, C 22.8, C45/Ck45, St 52-3, TStE 355, WStE 355, TStE 420, WStE 420, P250GH, P280GH, P355NH, P420NH, P420QH
ASTM/ASME	A 105, A 350 LF2, A 350 LF6, A694 F42, A694 F52, A694 F60, A694 F65, A694 F70
- Alloy Steel:

DIN/EN	16Mo3, X12CrMo9-1, 12CrMo19-5, 13CrMo4-5, 10CrMo9-10
ASTM/ASME	A 182 F1, A 182 F9, A 182 F5, A 182 F11 Cl. 1-3, A 182 F12 Cl. 1-2, A 182 F22 Cl. 1, A 182 F22 Cl. 3
- Stainless Steel:

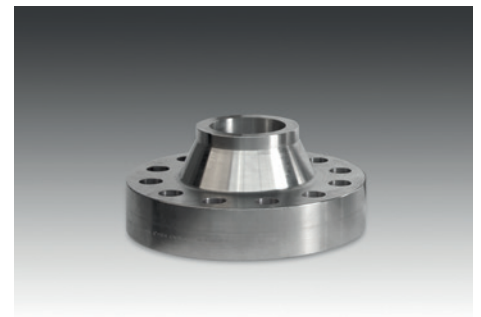
DIN/EN	1.4301, 1.4948, 1.4306, 1.4304, 1.4404, 1.4449, 1.4438, 1.4541, 1.4878, 1.4462, 1.4410, 1.4501, 1.4547, 2.4856, 2.4858
ASTM/ASME	A182 F304, A182 F304H, A 182 F304L, A 182 F316, A 182 F316L, A 182 F317, A 182 F317L, A 182 F321, A 182 F321H, A 182 F51, A 182 F53, A 182 F55, F44, Alloy 625, Alloy 825



SMALL O. D. FLANGES



LARGE O. D. FLANGES



HIGH PRESSURE FLANGES